



2012



SARMA



11.-12.FEBRUĀRĪ. GULBENĒ. APĒ



RALLY GULBENĒ



**APES
NŌVADS**



**GULBENES
NŌVADS**

Foto: D. Janova, fotoaģentūra 4rati



Rally Sarma 2012

11 – 12.02.2012.

Latvian Rally Championship and Cup 2012, race 2

Latvian Open Rallysprint Championship 2012, race 2

Latvian Cross-Country Rally Championship, race 1

Baltic Winter Rally Cup, race 3

Rally guide 1

Rally "Sarma 2012" website:

www.laf.lv

www.4rati.lv



www.laf.lv
www.4rati.lv

RALLY GUIDE 1

1



CONTENTS

1. INTRODUCTION	3
2. DESCRIPTION	7
2.1. Rally Sarma 2012	7
2.2. Rallysprint Sarma 2012	7
2.3. Cross-country Rally Sarma 2012	7
3. CONTACT DETAILS	8
3.1. Permanent contact details of the Organizer	8
3.2. Organizer of the Rally	8
3.3. Rally HQ	8
3.4. Press Centre	8
4. PROGRAM AND DEADLINES	9
5. ENTRY	11
5.1. Titles for which the Rally counts:	11
5.2. The maximum number of Entries accepted:	11
5.3. Eligible Cars:	12
5.3.1. Car Groups for Rally titles	12
5.3.2. Car groups for Rallysprint titles	12
5.3.3. Car groups for Cross-Country Rally titles	12
5.4. Competitors licence	13
5.5. Entry Fee	13
5.5.1. Rally Entry Fee:	13
5.5.2. Rallysprint Entry Fee:	13
5.5.3. Cross-Country Rally Entry Fee:	13
5.5.4. Entry Fee includes:	13
6. SERVICE ZONES	14
6.1. Service Parks will be located:	14
6.2. Service Parks will be open:	14
7. TYRES AND FUEL	14
7.1. Tyres during the race	14
7.2. Tyres during Reconnaissance	14
7.3. Restriction of Fuel	15
8. SHAKEDOWN	15
9. RECONNAISSANCE	15
10. MEDIA	15
11. AIR TRANSPORTATION	16
12. ACCOMODATION	16
13. TRAVELLING TO LATVIA / USEFUL FACTS	16
13.1. Travelling to Latvia	16
13.2. Useful facts	17
APPENDIXES	18
Appendix Nr. 1 - Planned Rally Itinerary	18
1.1. - Rally, Cross-Country Rally, Leg 1	18
1.2. - Rally, Cross-Country Rally, Leg 2	19
1.3. - Rallysprint	20
Appendix Nr.2 – Maps	21
2.1. - Gulbene city	21
2.2. - Ape city	22
2.3. - Forbidden Territories	23
Appendix Nr.3 – Service parks	24
3.1. - Service park APE	24
3.2. - Service park GULBENE	25

1. INTRODUCTION

SPEECH OF GULBENE REGION COUNCIL CHAIRMAN

Welcome in Gulbene region!

We welcome with real and true pleasure in the coldest winter month – February – the most professional and fastest car drivers in Gulbene region. One of the most popular activities – Rally “Sarma 2012” is present. This Rally assembles always close and distant visitors.

It seems, we must thank the nature for forested road twists and turns, mountains and hills, who are attractive on technical point of view and provide eye-catching pleasure.

We are all proud that despite the constant changes, sometimes difficulties in the country, we still have really rally drivers, unstoppable enthusiasts, strong supporters and passionate fans. I wish You all grateful weather conditions, lively mood and joy of new records in “Sarma 2012”!



*Sandra Daudziņa,
Gulbene Region Council Chairman*

The Rally in Latvia is unthinkable without traditional winter Rally and Rallysprint “Sarma”. 2012 the Rally “Sarma 2012” who will be 2nd race of Latvian Rally and Rallysprint Championship, 1st race of Latvian Cross-Country Rally Championship as well as 3rd race of Baltic Winter Cup will take place on 11-12 February.

Rally “Sarma” traditional takes place in Gulbene region, but this year the participants and spectators of the Rally expect a surprise. The Organizers have decided to expand the rally region and they have planned some Special Stages on the toads of Ape district.

The Rally will start 11 February in Ape. The competitors will drive two completely new Special Stages. These Stages will be run twice, second time – during the dark.

The second day of the Rally will start in Gulbene district. The competition will continue on 3 Special Stages (all Stages also twice). The Rally will finish with the last Stage – Power Stage. The winner of this Stage in each class will get in the Rally classification in addition two points, but the second best – one point. The finish of the Rally is planned in Gulbene and the race will end with Prize-giving in the Vecgulbenes manor.

HISTORY

The Rally "Sarma" is the only Rally in Latvia that happens 36th time without interruption. For first time the Rally "Sarma" started 1976. Then the race started in Riga and continued in legendary Kangaru region. Gulbene City is the centre of Rally "Sarma" since 1984. In this year the organization of the Rally began Vilhelms Sniedzāns.



Rally "Sarma" competitors-meeting end of the seventies



Snowdrifts of Rally "Sarma" 30 years before

In the last decade the most wins in the Rally "Sarma" - three – won Ivars Vasaraudzis/Valdis Spredzis (2004 with Mitsubishi Lancer EVO VII, 2006 with Mitsubishi Lancer EVO VIII and 2010 with Mitsubishi Lancer WRC).



Ivars Vasaraudzis / Valdis Spredzis during "Sarma 2005"

The most competitors in the last years were 2005 when in the Rally started 80 crews. The winner was crew from Estonia Margus Murakas / A. Ojamäe with Toyota Corolla WRC.

2007 the winner of Rally "Sarma" was Ivars Caune / Vladimirs Barinovs with Mitsubishi Lancer EVO VII.
2008 the winner of Rally "Sarma" was Andis Neikšāns / Pēteris Dzirkals with Mitsubishi Lancer EVO IX
2009 won Aivis Egle / Mārtiņš Jerums with Mitsubishi Lancer EVO IX (42 crews).

Rally "Sarma" is favorite due to convenient location and because of suitable weather conditions for winter rally and Special Stages for both home drivers and nearest neighbor Estonian fastest car pilots.

Last year the winner of the Rally "Sarma" was Estonian Georg Gross / Raigo Mölder with Ford Focus WRC 0,93 second ahead of his compatriot Otto Tanak.



The winner of „Sarma“ 2011 Georg Gross / Raigo Mölder

The organizer of „Sarma 2012“ is sure in February 2012 in Gulbene and Ape we will see a real, beautiful winter rally and interesting, sporty fight.

2. DESCRIPTION

Rally "Sarma 2012" will be run in compliance with LAF National Sporting Code General Part, LAF Rally General Regulations, Latvian 2012 Rally and Rallysprint Championship Regulations and its Appendixes, Regulating documents of LAF Rally Committee, Latvian 2012 Rallysprint Opened Championship and Cup Regulations and its Appendixes, LAF Standard Car Committee (SAK) Regulating documents and FIA Technical Regulations in International groups and Classes, LAF Technical Regulations in National Groups and Classes, LAF SCC Technical Regulations, as well in Latvia valid Street Traffic Law (excepted on Stages closed for participation) and Supplementary Regulations of this Rally "Sarma 2012".

2.1. Rally Sarma 2012

Rally will take place on Saturday 11 February and Sunday 12 February.

• The longest Special Stage SS 9/10	20,03 km
• The shortest Special Stage SS 1/3	9,32 km
• Number of Special Stages	10
• Overall length of Special Stages	129,88 km
• Overall Rally length	399,45 km

2.2. Rallysprint Sarma 2012

Rallysprint will take place on Saturday 11 February and Sunday 12 February.

• The longest Special Stage SS 4/6	13,82 km
• The shortest Special Stage SS 1	9,32 km
• Number of Special Stages	6
• Overall length of Special Stages	70,5 km
• Overall Rally length	269,01 km

The competitors of Rallysprint will start on Saturday 11 February together with all Rally competitors and will drive first two SS of Day 1 – SS1 and SS2, but on Sunday 12 February they will drive following SS on second day – SS5/7 and SS6/8.

ROAD Group competitors will start on Sunday 12 February along the route special prepared for Rallysprint group.

2.3. Cross-country Rally Sarma 2012

Cross-Country Rally will start on Saturday 11 February and on Sunday 12 February.

• The longest Special Stage SS 9/10	20,03 km
• The shortest Special Stage SS 1/3	9,32 km
• Number of Special Stages	10
• Overall length of Special Stages	129,88 km
• Overall Rally length	399,45 km

This document has not regulatory power. It is for information only.



3. CONTACT DETAILS

3.1. Permanent contact details of the Organizer

SIA "Gulbenes AUTO - MOTO"	Identification Nr. LV44603001248
Legal address:	Kļavu iela 30, Gulbene, LV-4401
Tel. / fax:	+371 64471665
Mob.tel.:	+371 29400787, +371 29266499
E-mail:	sia.automoto@inbox.lv
Bank:	SEB banka
Account:	LV53UNLA0007001467805
Code:	UNLALV2X

3.2. Organizer of the Rally

Rally Director	Vilhelms Sniedzāns	+371 29266499
Clerk of the Course	Jānis Sniedzāns	+371 29400787
Rally HQ Manager	Irēna Krastiņa	+371 29267519
Chief Technical Scrutineering	Ģirts Auziņš	+371 29447990
SCC Technical Scrutineer	Arnis Simsons	+371 29554383
Competitors` Relations Officer Rally	Dāvis Kalniņš	+371 26337333
Competitors` Relations Officer Rallysprint	Ivars Kalniņš	+371 29440069
Rally Secretary	Ilona Gaigole	+371 29563787
Press Officer	Ģirts Avotiņš	+371 29467027
Comunication and Marketing Manager	Dace Janova	+371 29450942

3.3. Rally HQ

10.02.2012	Gulbene, Brīvības str. 22, „Vecgulbenes muiža” building, 07:00 - 20:30 hrs
11.02.2012	Gulbene, Brīvības str. 22, „Vecgulbenes muiža” building, 08:00 - 13:30 hrs
11.02.2012	Ape, Pasta str. 26, Apes sports center building 12:00 - 21:00 hrs
12.02.2012	Gulbene, Brīvības str. 22, „Vecgulbenes muiža” building, 08:00 - 19:40 hrs

Tel.: +371 29400787, +371 29266499

E-mail: sia.automoto@inbox.lv

Website: www.laf.lv

3.4. Press Centre

11.02.2012	Ape, Pasta str. 26, Apes sports center building 12:00 - 21:00 hrs
12.02.2012	Gulbene, Brīvības str. 22, „Vecgulbenes muiža” building, 08:00 - 19:40 hrs

Press Officer: Ģirts Avotiņš

Tel.: +371 29467027

E-mail: girts.avotins@gmail.com

Website: www.laf.lv



www.laf.lv
www.4rati.lv

RALLY GUIDE 1

8

4. PROGRAM AND DEADLINES

Date	Time	Action	Place
Monday, 9.01.		Supplementary Regulations and Entry Form published	www.laf.lv
		Entries open	
		Forbidden territories announced	
Friday, 3.02.		Closing date for Entries	
Monday, 6.02.	18:00	Closing date for Shakedown	
		Closing date for Entry Fee payment	
Tuesday, 7.02.	18:00	Start number published	www.laf.lv
Friday, 10.02.		Closing date for forbidden territories	
	07:00-20:30	Rally HQ open	Rally HQ, Gulbene, Brīvības str. 22, in „Vecgulbenes muiža” building
	07:00	Service Park „Gulbene” open	Gulbene, Parka str. 2, Brīvības str. 22
	07:00-15:00	Administrative Checks and issuing of Rally documents, Rally, Cross-Country Rally and Rallysprint	Rally HQ, Gulbene, Brīvības str. 22, in „Vecgulbenes muiža” building
	07:30-10:00	Scrutineering for Shakedown sports cars	Gulbene, Parka str. 4, in „SIA Gulbenes Autobuss” building
	10:00-14:00	Shakedown	Gulbene district
	11:30-14:00	Scrutineering for Rallysprint cars	Gulbene, Parka str. 4, in „SIA Gulbenes Autobuss” building
	14:00	Scrutineering for „0” cars	Gulbene, Parka str. 4, in „SIA Gulbenes Autobuss” building
	14:30-20:30	Scrutineering for Rally, Cross-Country Rally cars	Gulbene, Parka str. 4, in „SIA Gulbenes Autobuss” building
	15:00-21:00	Reconnaissance, SS 1;3 , SS 2;4 for Rally, Cross-Country Rally and Rallysprint cars	Apes district
Saturday, 11.02.	08:00-13:30	Rally HQ open	Rally HQ, Gulbene, Brīvības str. 22, in „Vecgulbenes muiža” building

Date	Time	Action	Place
Saturday, 11.02.	08:00-12:30	Reconnaissance, SS 5;7 , SS 6;8 for Rallysprint cars	Gulbene district
		Reconnaissance, SS 5;7 , SS 6;8 , SS 9;10 for Rally and Cross-Country Rally cars	Gulbene district
	10:00	Service Park „Ape” open	Ape, „Tiltacikuzi”
	12:00-21:00	Rally HQ open	Rally HQ, Ape, Pasta str. 26, in Apes sports centre building
	12:30-21:00	Media centre open	Rally HQ, Ape, Pasta str. 26, in Apes sports centre building
	13:00	First Stewards meeting	Rally HQ, Ape, Pasta str. 26, in Apes sports centre building
	13:40	Publication of Start List for Leg 1, Rally, Cross-Country Rally and Rallysprint	Official Notice Board, Ape, Pasta str. 26, in Apes sports centre building
	15:00	Rally start	Ape, Stacijas str. 2, at Apes City Council
	18:44	Planned Finish Leg 1	Service park Ape
	20:30	Second Stewards meeting	Rally HQ, Ape, Pasta str. 26, in Apes sports centre building
	21:00	Publication of Start List for Leg 2, Rally and Rallysprint	Official Notice Board, Ape, Pasta str. 26, in Apes sports centre building
Sunday 12.02.	07:30	Service Park “Gulbene” open	Gulbene, Parka str. 2, Brivibas str. 22
	08:00-19:40	Rally HQ open	Rally HQ, Gulbene, Brivibas str. 22, in „Vecgulbenes muiža” building
	08:00-18:00	Media centre open	Gulbene, Brivibas str. 18, in „Vecgulbenes muiža” building
	08:00-08:30	Administrative Checks and issuing of documents, Rallysprint ROAD group	Rally HQ, Gulbene, Brivibas str. 22, in „Vecgulbenes muiža” building
	08:30-09:00	Scrutineering, Rallysprint ROAD group cars	Gulbene, Parka str. 2, by CSDD
	09:00	Leg 2 start, Rally, Cross-Country Rally and Rallysprint	Gulbene, Brivibas str. 18, at „Vecgulbenes muiža” building

Date	Time	Action	Place
Sunday 12.02.	09:30	Publication of Start List for Rallysprint ROAD group	Official Notice Board, Gulbene, Brīvības str. 22, in „Vecgulbenes muiža” building
	13:49	Planned Rallysprint finish	Gulbene, Brīvības str. 18, at „Vecgulbenes muiža” building
	From 13:49	Planned Rallysprint Final Scrutineering	Gulbene, Parka str. 2, by CSDD
	17:03	Planned Rally, Cross-Country Rally finish	Gulbene, Brīvības iela 18, pie „Vecgulbenes muiža” ēkas
	From 17:03	Planned Rally, Cross-Country Rally Final Scrutineering	Gulbene, Parka str. 2, by CSDD
	18:40	Third Stewards meeting	Rally HQ, Gulbene, Brīvības str. 22, in „Vecgulbenes muiža” building
	19:00	Publication of Provisional Final Classification	Official Notice Board, Gulbene, Brīvības str. 22, in „Vecgulbenes muiža” building
	19:30	Publication of Final Classification	Official Notice Board, Gulbene, Brīvības str. 22, in „Vecgulbenes muiža” building
	19:45	Prize-giving	Gulbene, Brīvības str. 18, in „Vecgulbenes muiža” hall

5. ENTRY

5.1. Titles for which the Rally counts:

Latvian 2012 Rally Championship and Cup, race 2
Latvian 2012 Rallysprint open Championship, race 2
Latvian 2012 Cross-Country Rally Championship, race 1
Baltics Winter Rally Cup, race 3

5.2. The maximum number of Entries accepted:

The maximum number of Entries accepted for the Rally Sarma 2012 will be - 100. Should more than this number of Entries be received, the selection will be at the discretion of the Organizer.

5.3. Eligible Cars:

5.3.1. Car Groups for Rally titles.

In compliance with Latvian 2012 Rally Championship Regulations:

N4	takes in N4 class (only N4 group cars with homologation till 31 December, 2010)
R4	takes in R4; N4; S2000 in compliance with FIA Technical Regulations
„A Plus”	takes in WRC; A8; WRC2011; RRC in compliance with FIA Technical Regulations and confirmed with explanations of LAF Technical Regulations; L13 (over 3000 cm ³ – up to 3500 cm ³); L12 (over 2500 cm ³ – up to 3000 cm ³); L11 (over 2000 cm ³ – up to 2500 cm ³) 4-wheel drive cars in compliance with LAF Technical Regulations
R2	takes in N1; N2; N3; A6; A5; R2; R1 (MS1) in compliance with FIA Technical Regulations

LAF Rally Committee Board defines for Latvian Rally Cup following classification groups:

2WD	takes in R3; A7 – in compliance with FIA Technical Regulations; L10 (over 1600 cm ³ and up to 2000 cm ³); L9 (over 1400 cm ³ and up to 1600 cm ³); L8 (over 1000 cm ³ and up to 1400 cm ³). All cars of L group – with single-axis drive in compliance with LAF Technical Regulations
LRČ Juniors	Run: only in races in Latvia; Takes part: all drivers (in compliance with Sporting Code) up to 23 years on 1 January 2012 and start with single-axis drive car in compliance with A, N, R, L group regulations and engine capacity up to 2000 cm ³

5.3.2. Car groups for Rallysprint titles.

In compliance with Latvian 2012 open Rallysprint Championship and Cup Regulations:

1600	takes in cars with power drive to one axle up to 1600 cm ³
2WD OPEN	takes in cars with power drive to one axle over 1600 cm ³
4WD	takes in 4 wheel drive cars with atmospheric engine
4WD OPEN	takes in 4 wheel drive cars with turbo engine
ROAD	takes in cars, which safety cage is not required

5.3.3. Car groups for Cross-Country Rally titles.

In compliance with Latvian 2012 Cross-Country Rally Championship Regulations:

T1 (Super production)	Cross-Country cars in compliance with International Convention about Road Traffic
T2(Production)	Cross-Country cars in compliance with FIA Technical Regulations
N1	Cross-Country cars in compliance with LAF Technical Regulations
R1	Cross-Country cars in compliance with LAF Technical Regulations

5.4. Competitors licence

To take part in the race both the driver and the co-driver must hold a Competitors Licence according to the Latvian Rally, Rallysprint and Cross-Country Rally Championship Regulations 2012. You can find these Regulations on the website: www.laf.lv

5.5. Entry Fee

Entry Fee including Organizers` compulsory Advertising is following:

5.5.1. Rally Entry Fee:

Group R4	300 LVL
Group N4	300 LVL
Group A Plus	300 LVL
Group R2	300 LVL

5.5.2. Rallysprint Entry Fee:

Group 1600	150 LVL
Group 2 WD OPEN	170 LVL
Group 4WD	170 LVL
Group 4 WD OPEN	170 LVL
Group ROAD	60 LVL

5.5.3. Cross-Country Rally Entry Fee:

Group T1	300 LVL
Group T2	300 LVL
Group N1	300 LV
Group R1	300 LV

5.5.4. Entry Fee includes:

Nr	Entry Fee includes	number
1	Supplementary Regulations and Rally Guide 2 with official route maps	1
2	Road Book	1
3	Competitors Passes	2
4	Service Crew Passes	2
5	Start numbers for the competing car	4
6	Rally Plate	2
7	Service Plate	1
8	Plate Reconnaissance Car and Start number	1
9	Service parking place	6x4



Entry Fee for Rally must be paid before 6 February 2012 up to 18:00 hrs to following bank account of the Organizer:

Account name:	SIA „Gulbenes AUTO – MOTO”
Reg. Nr.:	LV44603001248
Address:	Kļavu str. 30, Gulbene, Gulbene distr., LV4401
Bank:	AS SEB bank
IBAN:	LV53 UNLA 0007 0014 6780 5
SWIFT code:	UNLALV2X

Please also note payment must be made in lats (LVL).

It is possible to pay the Entry Fee cash during the Administrative Checks. The Organizer must be informed about it per Mob. Phone Nr. +371 29400787.

6. SERVICE ZONES

6.1. Service Parks will be located:

Friday	10 February	Parka str. 2 and Brīvības str. 22, in Gulbene
Saturday	11 February	„Tiltacikuži”, in Ape
Sunday	12 February	Parka str. 2 and Brīvības str. 22, in Gulbene

Location of the Service Parks in Ape and Gulbene as well as its layout is shown in Appendix Nr. 3 (exactly layout of Service Parks will be published in Rally Guide 2).

All Service Parks will have a good working surface on tarmac and gravel.

All crews will be provided with minimal Service area space of – 6X4 m2.

6.2. Service Parks will be open:

Friday	10 February	from 07:00 hr	in Gulbene
Saturday	11 February	from 10:00 hr	in Ape
Sunday	12 February	from 07:30 hr	in Gulbene

7. TYRES AND FUEL

7.1. Tyres during the race

It is allowed to use during the competition studded tyres.

Exactly description will be done in Supplementary Regulations.

7.2. Tyres during Reconnaissance

It is allowed to use during the Reconnaissance winter tyres:

- studded tyres and tyres without studs in accordance with Latvian Rules of the Road Traffic and Rules of the Cabinet Nr.466 from 29 April 2004 (Art. 501.3.1.);
- Sports training winter tyres with following number of studs: 15” - 230 studs per tyre, 16” - 250 studs per tyre.



7.3. Restriction of Fuel

It is permitted for participants to use Fuel in accordance with FIA Technical Regulations. To use Fuel Certificate in accordance to FIA Regulations is necessary. The Fuel Certificate may be submitted on behalf of the applicant from supplier of Fuel, if the Fuel supply and filling will be made only in the Refuelling Zones. The form of the Certificate will be published in the Appendix of the Rally Guide 2.

8. SHAKEDOWN

Shakedown is open for all race participants, who have sent the Shakedown Entry to the Organizer and make appropriate payment - 40 LVL.

Shakedown will take place in Gulbene district on Friday, 10 February from 10:00 – 14:00 hrs.

The length of the Shakedown will be about 4 km, with a liaison approximately 4 km from Shakedown finish to Shakedown start.

There are 10 km from Service Park "Gulbene" till Shakedown Stage.

9. RECONNAISSANCE

Reconnaissance will take place on:

Friday	10 February	from 15:00 – 21:00 hrs (SS 1;3 and SS 2;4 for Rally and Rallysprint competitors)
Saturday	11 February	from 08:00 – 12:30 hrs (SS 5;7 , SS 6;8 for Rallysprint competitors) from 08:00 – 12:30 hrs (SS 5;7 , SS 6;8 and SS 9;10 for Rally and Cross-Country Rally competitors)

Reconnaissance for Rallysprint ROAD group competitors is not intended.

Exactly description from Reconnaissance procedure will be published in the Supplementary Regulations.

10. MEDIA

Rally Press Officer: Ģirts Avotiņš
Mob. phone: +371 29467027
E-mail: girts.avotins@gmail.com

Media accreditation:

Media accreditation form will be available from 9 January 2012 on the official website of Rally „Sarma 2012”: www.laf.lv

Media accreditation will be given only to the representatives of Media (journalists, photographers, video-operators, radio reporters) as well as Press Officers of Rally teams, who have sent fulfilled application up to 6 February 2012 to the Media Centre.

For all Media representatives and Press Officers of Rally teams regulations published in the Media accreditation form are binding.

The accredited representatives must respect instructions of route marshals and Rally officials.

Media centre hours:

Saturday	11 February	12:30 - 21:00, Rally HQ, Ape, Pasta str. 26, in Apes sports centre hall
Sunday	12 February	8:00 - 18:00, Gulbene, Brivibas str. 18, in „Vecgulbenes muiža” building

11. AIR TRANSPORTATION

Location of any air transportation during the Rally on any process place of the Rally must be coordinated with the Organizer of the Rally in written up to closing date for Entries. For such permission the Organizer will require additional payment. The Pilot of air transportation must respect Latvian Rally Championship Regulations for air transportation.

The Application form for air transportation will be published on the official website of Rally „SARMA 2012”: www.laf.lv

12. ACCOMODATION

The Organizer of Rally offers You to choose the most suitable accommodation with assistance of following websites:

- **District Gulbene**
<http://www2.gulbene.lv/tourism/index.php/in-english-mainmenu-116/accommodation-mainmenu-138>
- **District Ape**
<http://www.ape.lv/eng.htm>
- **District Alūksne**
<http://www.aluksnetourism.info/eng.htm>
- **District Madona**
<http://www.madona.lv/turisms/en/?s=1271012807&ln=en>

13. TRAVELLING TO LATVIA / USEFUL FACTS

13.1. Travelling to Latvia.

Travelling to Latvia by Air:

Riga International Airport: www.riga-airport.com
Riga airport – Gulbene: 181km

Travelling to Latvia by Sea:

Liepāja Seaport: www.scandlines.lt
Liepāja Seaport – Gulbene: 426 km

Ventspils Seaport: www.finnlines.com
www.scandlines.lt

Ventspils Seaport – Gulbene: 403 km

Rīga Seaport: www.tallink.lv
Rīga Seaport – Gulbene: 190 km



13.2. Useful facts

Detailed tourism information is to find on websites:

- <http://www2.gulbene.lv/tourism> about City Gulbene and district Gulbene
- <http://www.ape.lv/turisms.htm> about City Ape and district Ape
- <http://www.aluksnetourism.info> about City Aluksne and district Alūksne
- <http://www.madona.lv/turisms> about City Madona and district Madona

On these websites You will find information about towns and its districts, holiday homes, lodgings, sights, public catering and other suitable information.

Gulbene tourism information centre

Address: Ābeļu str. 2, Gulbene, Gulbene district, LV-4401
 Website: <http://www.gulbene.lv/tourism>
 E-mail: turists@gulbene.lv
 Phone: (+371) 64497729

Ape tourism information centre

Address: Skolas str. 4, Ape, Ape district, LV-4337
 Website: <http://www.ape.lv/turisms.htm>
 E-mail: tic@ape.lv
 Phone: (+371) 64322273, (+371) 29439207, (+371) 22037518

Alūksne tourism information centre

Address: Pils str. 74, Alūksne, Alūksne district, LV-4301
 Website: <http://www.aluksnetourism.info>
 E-mail: tic@aluksne.lv
 Phone: (371) 64322804, (+371) 29130280

Madona tourism information centre

Address: Saieta laukums 1, Madona, Madona district, LV-4801
 Website: <http://www.madona.lv/turisms>
 E-mail: tic@madona.lv
 Phone: (+371) 29130437



APPENDIXES

Appendix Nr. 1 - Planned Rally Itinerary

1.1. - Rally, Cross-Country Rally, Leg 1

Sarma 2012

Primary itinerary rally Leg 1 Section 1-2

Plānotā rallija maršrutkarte 1.Aplis Sekcijas 1 - 2

Start / Starts (Sections /Sekcijas 1,2)		Saturday 11 February 2012 / Sestdiena 11. Februāris 2012				
ver.1.1.-23102011		Sunrise 08:02		Sunset 17:14		
TC	LOCATION	SS dist	Liaison dist	Total dist	Target time	1st car due
LK	VIETAS NOSAUKUMS	PS dist	Pārbrauciens	Kopā	Laika norma	1 a/m laiks
0	Start - Ape city					15:00
	Start no Refuel. Distance to next refuel	19,32	19,07	38,39		
1		-	1,42	1,42	0:09	15:09
SS 1	SS 1	9,32	-	-		15:12
2		-	12,42	21,74	0:22	15:34
SS 2	SS 2	10,00	-	-		15:37
2A	Regroup - IN	-	5,11	15,11	0:19	15:56
2B	Regroup - OUT	-	0,12	0,12	0:30	16:26
	Service - IN					
	Service A - Ape	19,32	19,07	38,39	1:22	
2C	Service OUT	-	-	-		17:48
RZ	Refuel - All competitors					
1	Distance to next refuel	19,32	17,92	37,24		
3		-	0,39	0,39	0:09	17:57
SS 3	SS 3	9,32	-	-		18:00
4		-	12,42	21,74	0:22	18:22
SS 4	SS 4 (stage in the night)	10,00	-	-		18:25
4A	Finish Leg 1 - Service Park Ape	-	5,11	15,11	0:19	18:44
		19,32	17,92	37,24		
Saturday totals / Sestdienā kopā		38,64	36,99	75,63		

Section / Sekcija 1

Section / Sekcija 2



1.2. - Rally, Cross-Country Rally, Leg 2

Sarma 2012

Primary itinerary rally Leg 2 Section 3 - 6

Plānotā rallija maršrutkarte 2.Aplis Sekcijas 3 - 6

Start / Starts (Sections / Sekcijas 3,4,5,6)		Sunday 12 February 2012 / Svētdiena 12. Februāris 2012				
ver.1.1.-23102011		Sunrise 08:00		Sunset 17:17		
TC	LOCATION	SS dist	Liaison dist	Total dist	Target time	1st car due
LK	VIETAS NOSAUKUMS	PS dist	Pārbrauciens	Kopā	Laika norma	1 a/m laiks
4B	Start - Gulbene city					9:00
	Start no Refuel. Distance to next refuel	25,59	89,84	115,43		
5		-	35,7	35,7	0:41	9:41
SS 5	SS 5	11,77	-	-		9:44
6		-	18,41	30,18	0:28	10:12
SS 6	SS 6	13,82	-	-		10:15
6A	Regroup - IN	-	35,61	49,43	0:47	11:02
6B	Regroup - OUT	-	0,12	0,12	0:10	11:12
	Service - IN					
	Service B - Gulbene	25,59	89,84	115,43	0:30	
6C	Service OUT	-	-	-		11:42
RZ	Refuel - All competitors					
2	Distance to next refuel	25,59	89,84	115,43		
7		-	35,7	35,7	0:46	12:28
SS 7	SS 7	11,77	-	-		12:31
8		-	18,41	30,18	0:28	12:59
SS 8	SS 8	13,82	-	-		13:02
8A	Regroup - IN	-	35,61	49,43	0:47	13:49
8B	Regroup - OUT	-	0,12	0,12	0:30	14:19
	Service - IN					
	Service C - Gulbene	25,59	89,84	115,43	0:30	
8C	Service OUT	-	-	-		14:49
RZ	Refuel - All competitors					
3	Distance to next refuel	20,03	26,51	46,54		
9		-	8,6	8,6	0:23	15:12
SS 9	SS 9	20,03	-	-		15:15
9A	Regroup IN	-	17,79	37,82	0:38	15:53
9B	Regroup OUT	-	0,12	0,12	0:10	16:03
	Service - IN					
RZ	Remote refuel - All competitors					
4	Distance to Parc Ferme IN	20,03	26,39	46,42		
10		-	8,6	8,6	0:19	16:22
SS 10	SS 10 (Power Stage)	20,03	-	-		16:25
11	Finish Leg 2 - Parc Ferme IN	-	17,79	37,82	0:38	17:03
Sunday totals / Svētdienā kopā		91,24	232,58	323,82		
TOTALS OF THE RALLY						
		SS	Liaison	Total	%	
	Saturday 11 february - 4SS	38,64	36,99	75,63	51%	
	Sunday 12 february - 6SS	91,24	232,58	323,82	28%	
	Total - 10 SS	129,88	269,57	399,45	33%	

Section / Sekcija 3

Section / Sekcija 4

Section / Sekcija 5

Section / Sekcija 6



1.3. - Rallysprint

Sarma 2012

Plānotā rallijsprinta maršrutkarte 1.Aplis Sekcija 1

Starts (Sekcija 1)		Sestdiena 11. Februāris 2012				
ver.1.1.-23102011						
LK	VIETAS NOSAUKUMS	PS dist	Pārbrauciens dist	Kopā dist	Laika norma	1 a/m laiks
0	Starts - Ape city					15:00
	Distance līdz Servisa Parkam Ape	19,32	37,9	76,54		
1		-	1,42	1,42	0:09	15:09
PS 1	PS 1	9,32	-	-		15:12
2		-	12,42	21,74	0:22	15:34
PS 2	PS 2	10,00	-	-		15:37
2A	1. Apļa Finišs - Servisa Parks Ape	-	5,11	15,11	0:19	15:56
		19,32	18,95	38,27		
Sestdienā kopā		19,32	18,95	38,27		

Sekcija 1

Sarma 2012

Plānotā rallijsprinta maršrutkarte 2.Aplis Sekcija 2 - 3

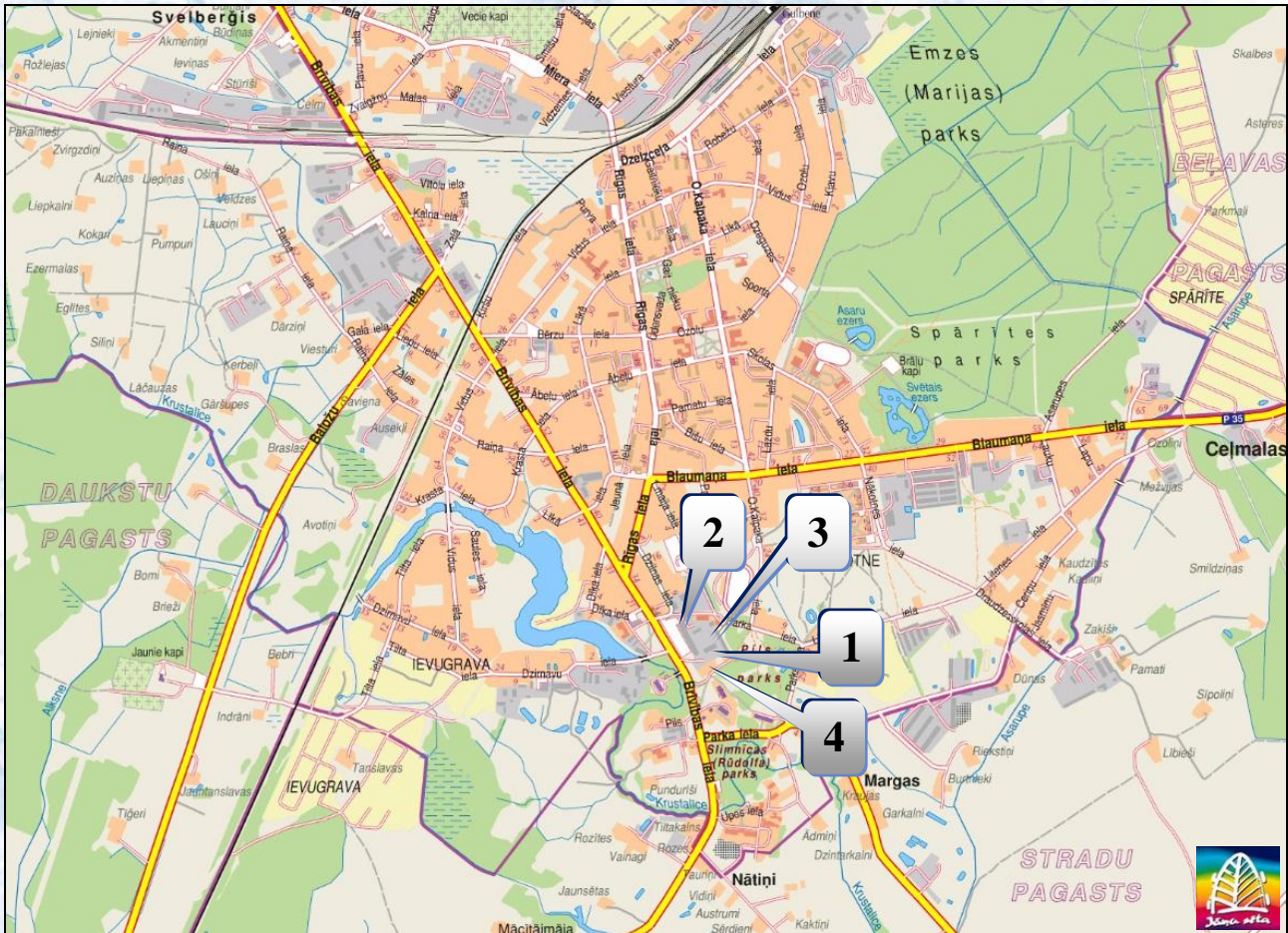
Starts (Sekcijas 2 - 3)		Svētdiena 12. Februāris 2012				
ver.1.1.-23102011						
LK	VIETAS NOSAUKUMS	PS dist	Pārbrauciens dist	Kopā dist	Laika norma	1 a/m laiks
2B	Starts - Gulbene					9:00
	Distance līdz Degvielas Uzpildei	25,59	89,84	115,43		
3		-	35,7	35,7	0:41	9:41
PS 3	PS 3	11,77	-	-		9:44
4		-	18,41	30,18	0:28	10:12
PS 4	PS 4	13,82	-	-		10:15
4A	Regroup - IN	-	35,61	49,43	0:47	11:02
4B	Regroup - OUT Service - IN	-	0,12	0,12	0:10	11:12
	Service A - Gulbene	25,59	89,84	115,43	0:30	
4C	Service OUT	-	-	-		11:42
DU	Degvielas uzpilde					
1	Distance līdz Slēgtajam Parkam	25,59	89,72	115,31		
5		-	35,7	35,7	0:46	12:28
PS 5	PS 5	11,77	-	-		12:31
6		-	18,41	30,18	0:28	12:59
PS 6	PS 6	13,82	-	-		13:02
6A	Rallijsprinta Finišs - Slēgtais Parks IN	-	35,61	49,43	0:47	13:49
Svētdienā kopā		51,18	179,56	230,74		
RALLIJSPRINTA KOPA						
		PS	Pārbrauciens	Kopā		%
	Sestdiena 11. Februāris - 2 PS	19,32	18,95	38,27		50%
	Svētdiena 12. Februāris - 4 PS	51,18	179,56	230,74		22%
	Kopā - 6 PS	70,5	198,51	269,01		26%

Sekcija 2

Sekcija 3

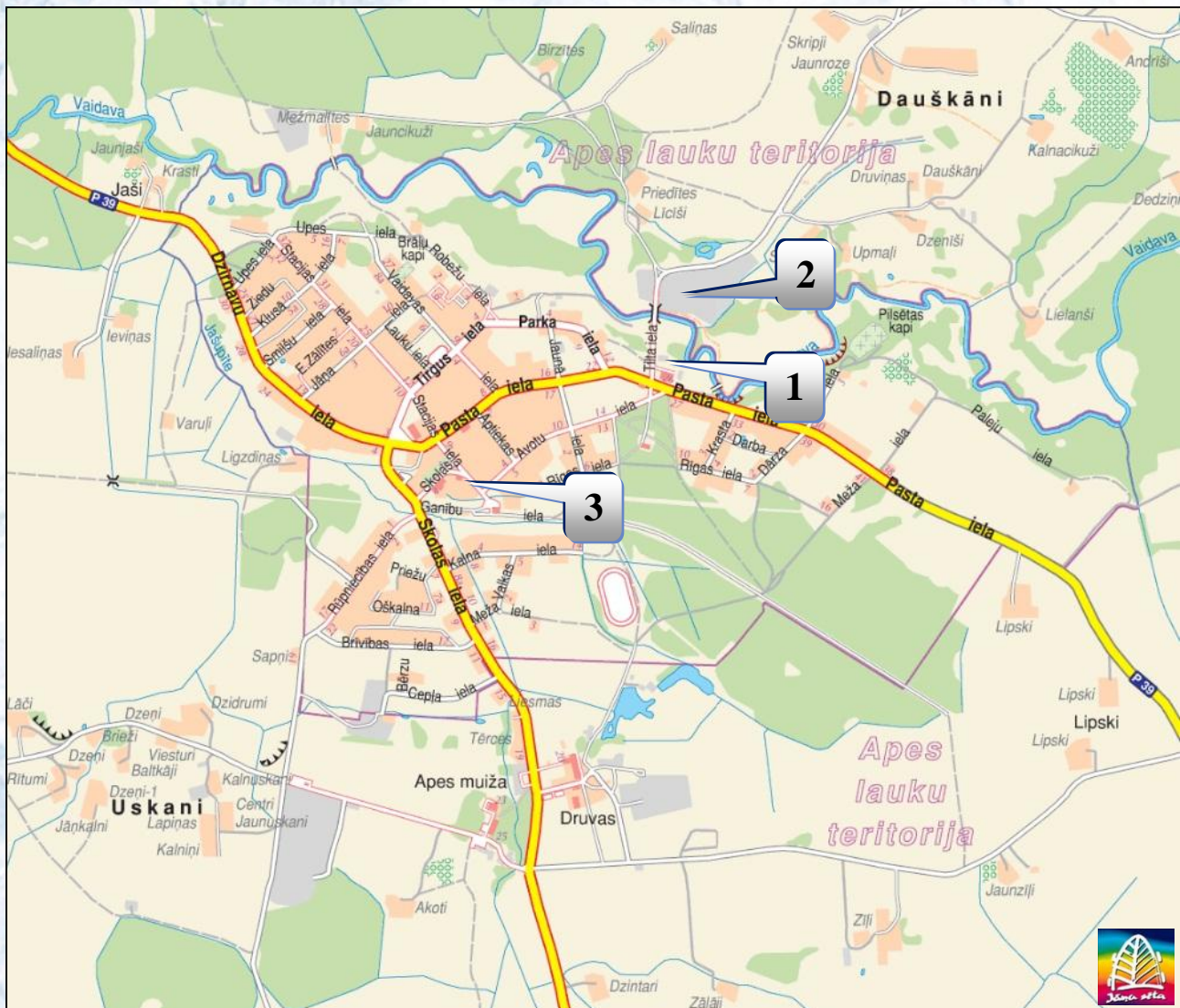
Appendix Nr.2 – Maps

2.1. – Gulbene city



1	RALLIJY HQ	<i>Brivibas str. 22, Gulbene, „Vecgulbenes muiza” building</i>
2	SERVICE PARK	<i>Parka str. 2 and Brivibas str. 22, Gulbene</i>
3	SCRUTINEERING	<i>Parka str. 4, Gulbene „SIA Gulbenes Autobuss” building</i>
4	RALLY START, LEG 2	<i>Brivibas str. 18, Gulbene, at „Vecgulbenes muiza” building</i>

2.2. - Ape city



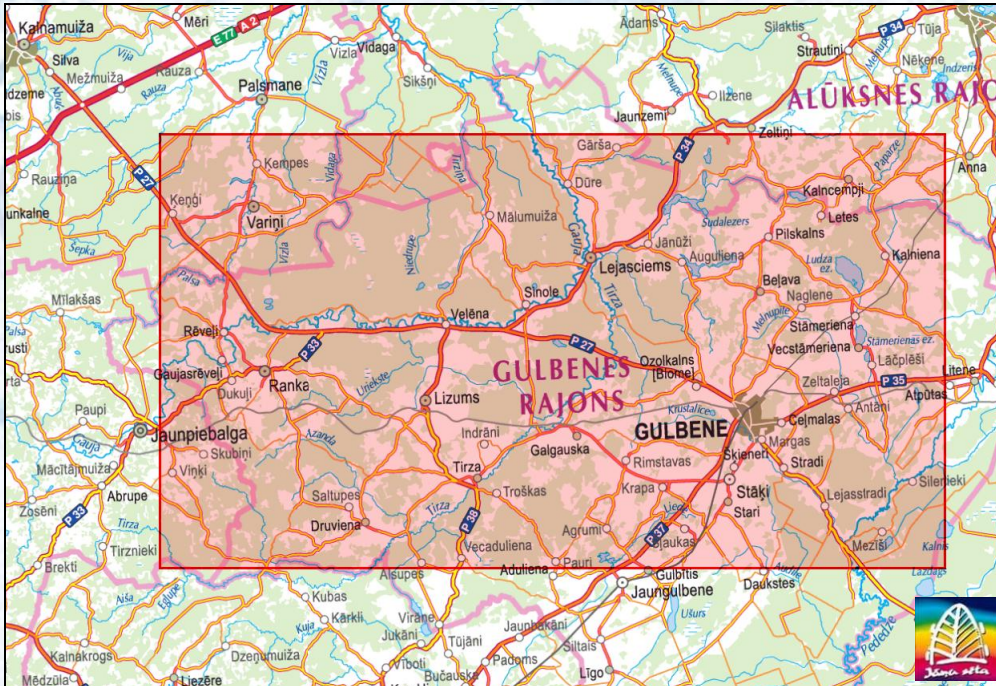
1	RALLY HQ	<i>Pasta str. 26, Ape, Ape sports centre</i>
2	SERVICE PARK	<i>„Tiltacikuži”, Ape</i>
3	RALLY START, LEG 1	<i>Stacijas str. 2, Ape, by Ape Region Council</i>

2.3. - Forbidden Territories

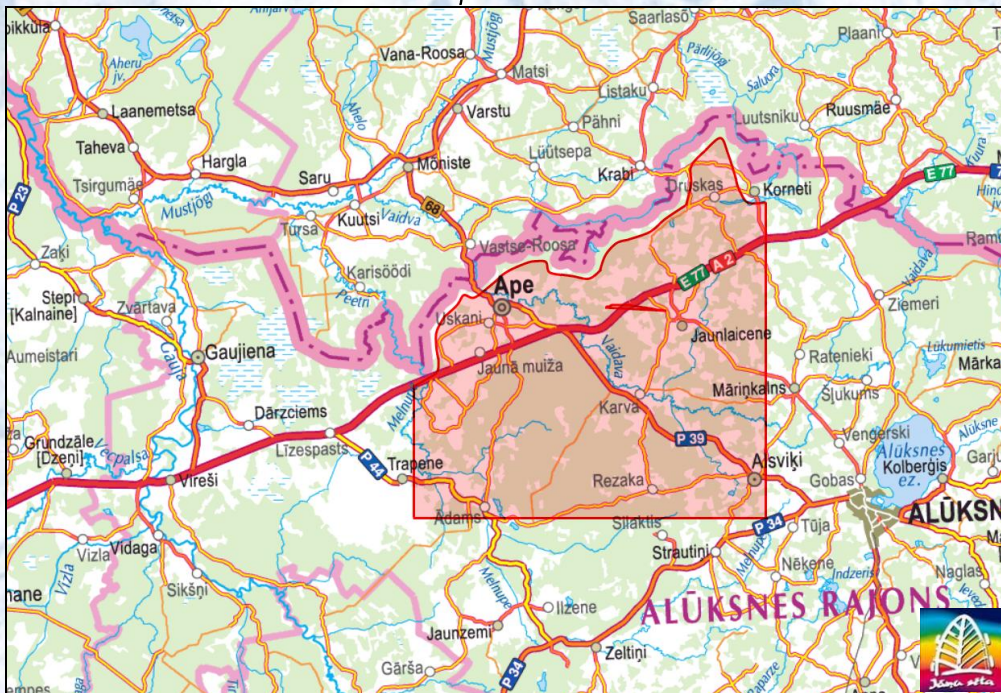
Charted region in the map is forbidden zone for drivers, participants and their representatives from 09.01.2012. till 10.02.2012. It is forbidden to drive on the roads in the charted region.



Gulbene district

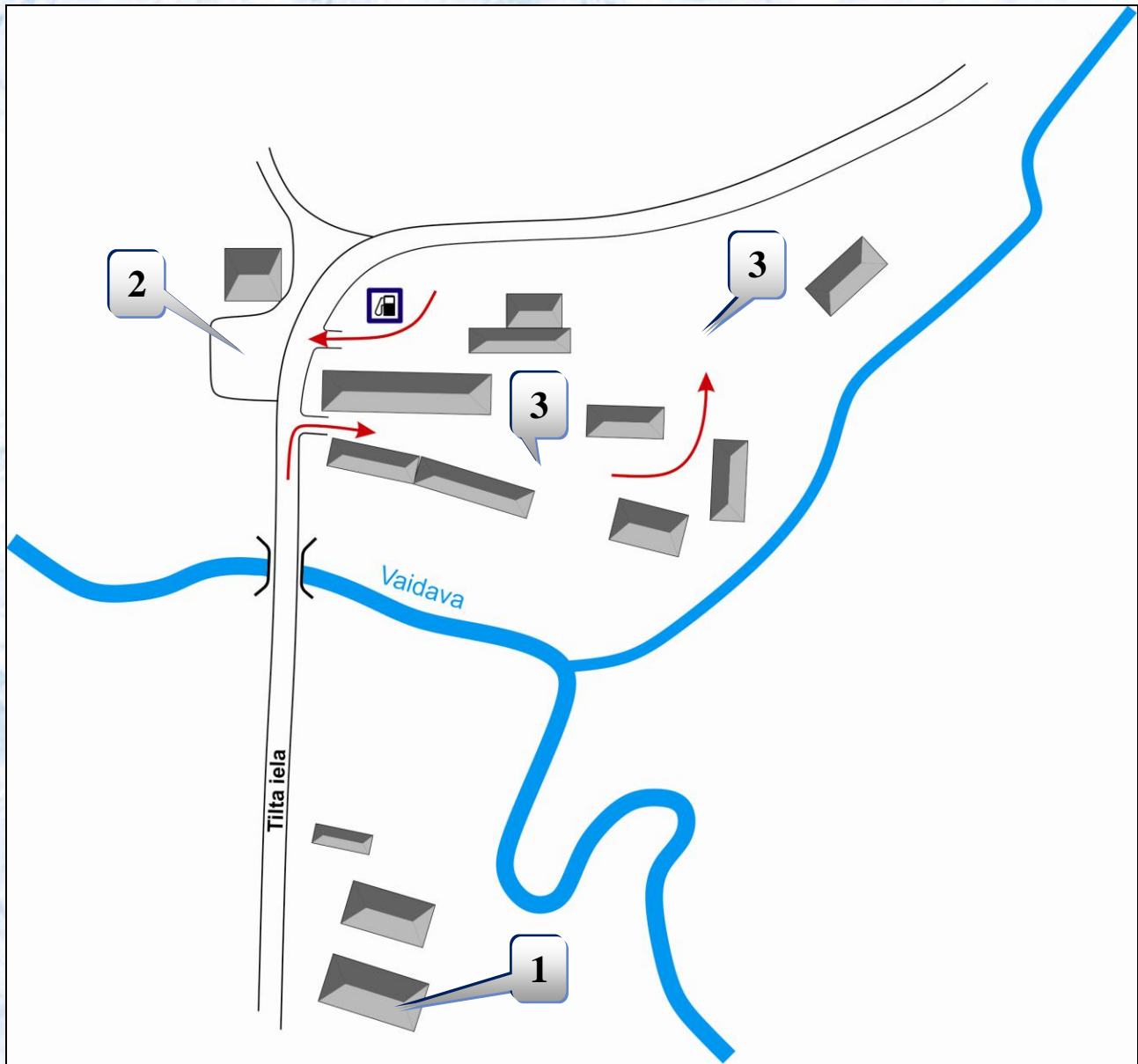


Ape district



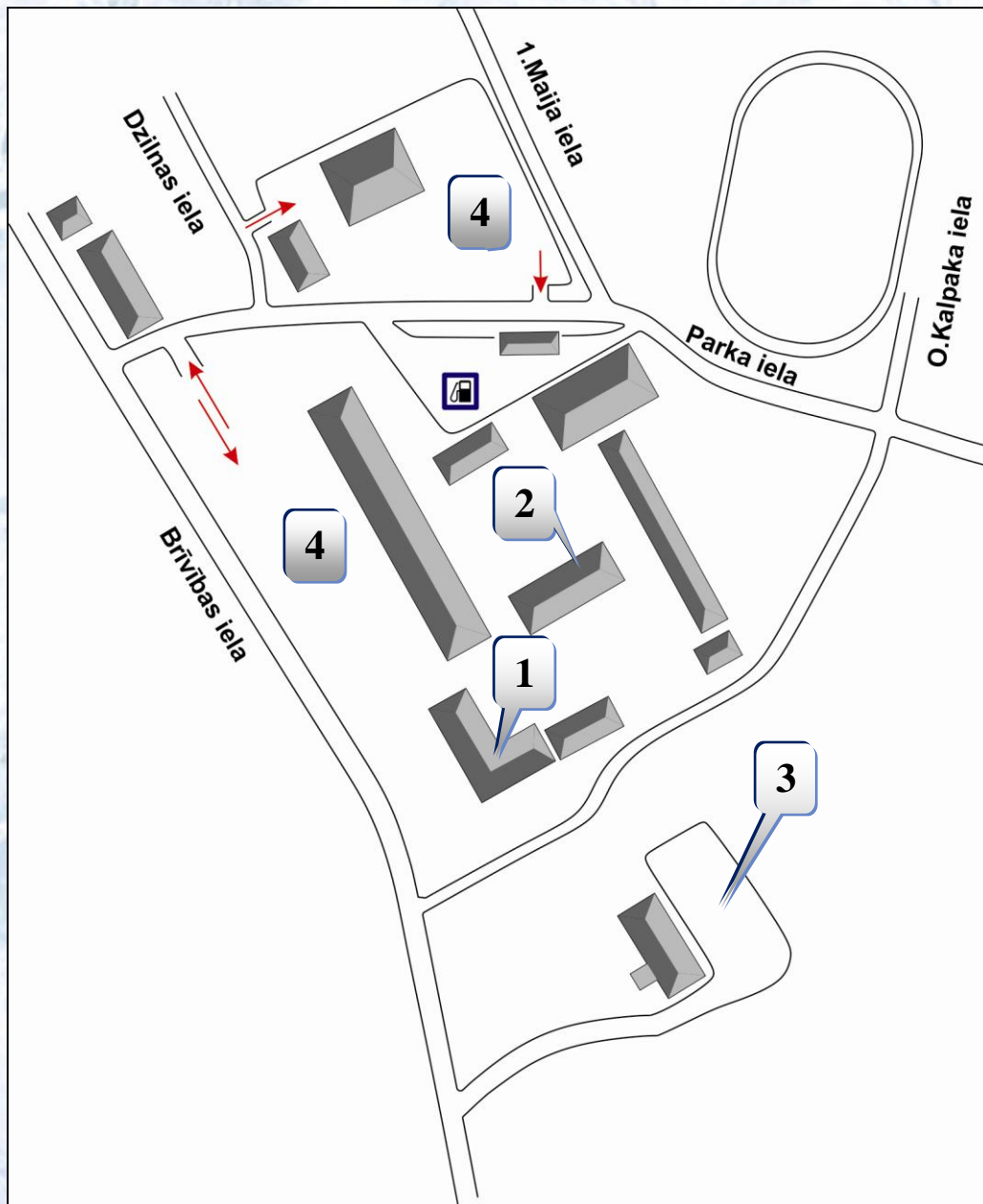
Appendix Nr.3 – Service parks

3.1. - Service park APE



- | | |
|---|-------------------------|
| 1 | RALLY HQ / PRESS CENTRE |
| 2 | NEUTRALIZATION ZONE |
| 3 | SERVICE PARK |

3.2. - Service park GULBENE



- | | |
|---|----------------------------------|
| 1 | RALLY HQ / PRESS CENTRE |
| 2 | SCRUTINEERING |
| 3 | NEUTRALIZATION ZONE / PARK FERME |
| 4 | SERVICE PARK |